

AFO 327 Serial exchange

327.1 Introduction

In a serials exchange agreement, one partner institute agrees to send your library one or more publications in exchange for your library sending it one or more publications. Each exchange partner is added as a supplier in AFO 241. When you link exchange partners (suppliers) to subscription records in AFO321 (as supplier to which claims are sent) these subscriptions will appear in AFO 327 (option To be received).

One additional partner record, representing your library, is also added to AFO 241. The subscriptions of this 'supplier will also appear in AFO 327 (option To be sent).

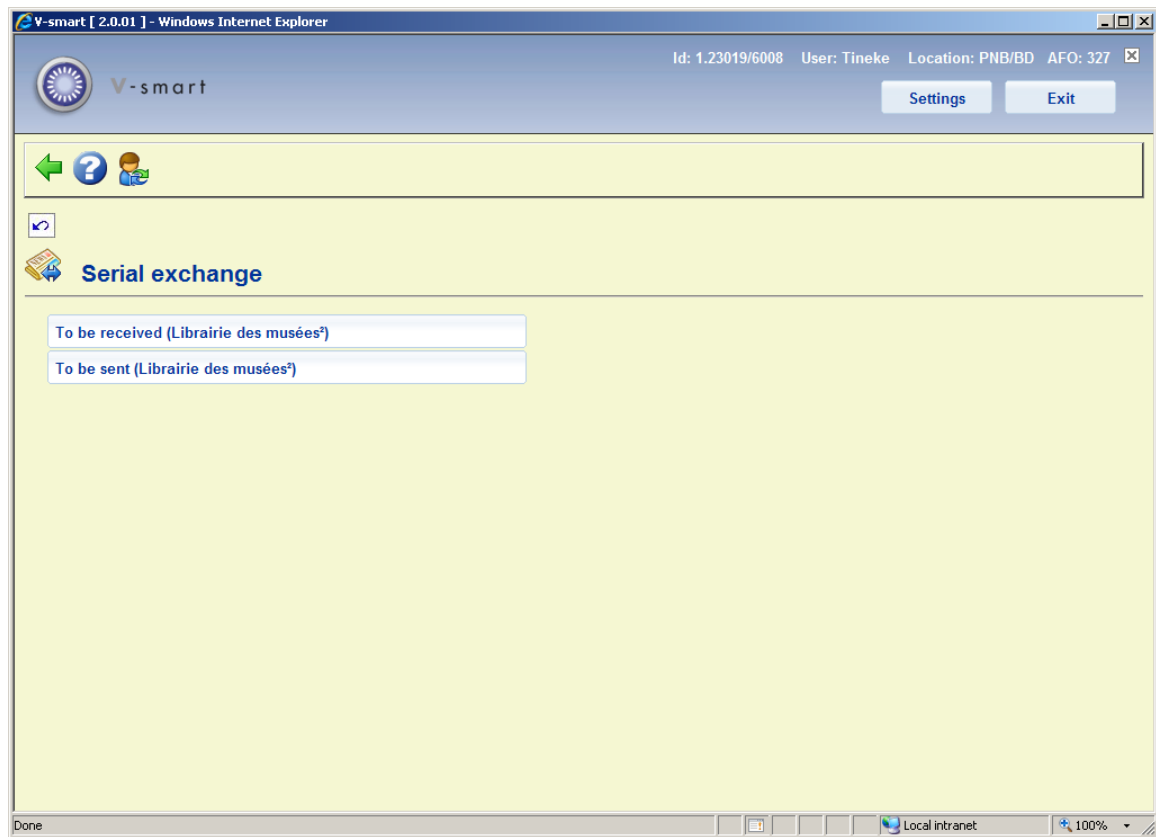
327.2 Maintenance of exchange subscriptions

After starting this AFO, an input form will be displayed:



The screenshot shows a dialog box titled "Enter exchange partner". The dialog has a light green background. At the top left, there is a small icon of a book with a blue arrow pointing to it. To the right of the icon is the text "Enter exchange partner". Below this, there is a text input field labeled "Institute" with a small icon to its right. To the right of the input field is a vertical panel with three buttons: "OK", "Cancel", and "Help".

After entering a supplier number (or searching for a supplier) and clicking **OK**, the menu of this AFO will appear:

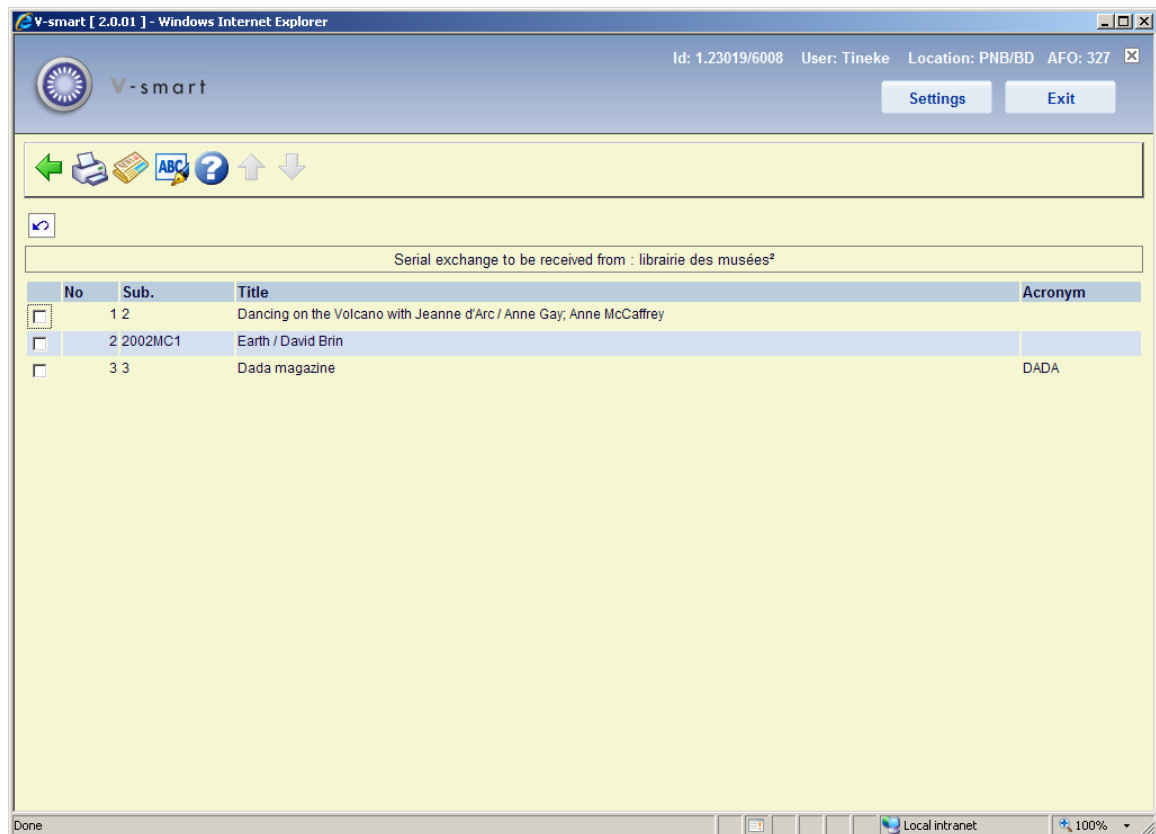


After both menu options the name of the selected supplier is shown in brackets.

The options are described in the next paragraphs.

327.2.1 Titles to be received

After selecting this option an overview screen will be displayed:



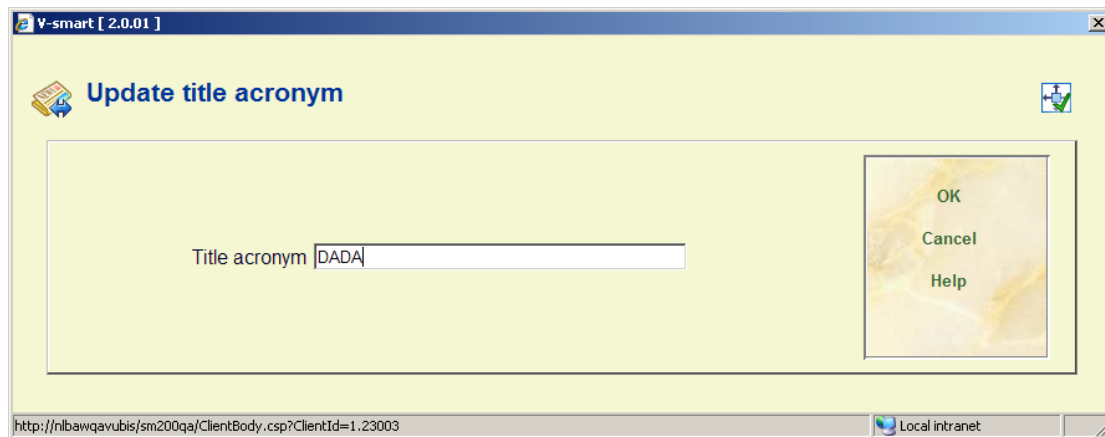
This screen lists the titles you *receive* from this supplier. The top bar displays the name of the selected supplier.

Options on the screen

Print label: After selecting this option, the standard form for generating output is displayed. This allows you to print an address label for this supplier.

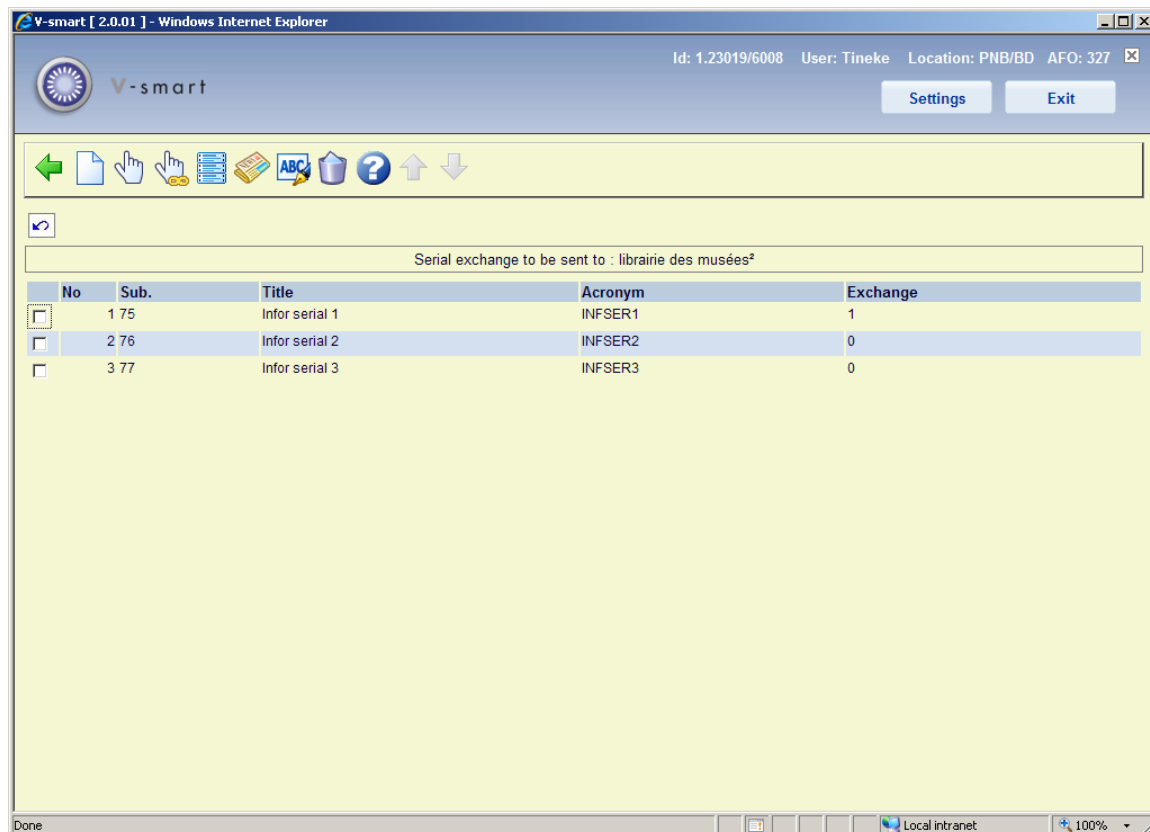
View subscription: Select a line and then this option. This takes you to the screen with the general subscription details (as in AFO 321).

Update acronym: Select a line and then this option. An input screen appears, allowing you to add/modify the acronym for the selected serial.



327.2.2 Titles to be sent

After selecting this option an overview screen will be displayed:

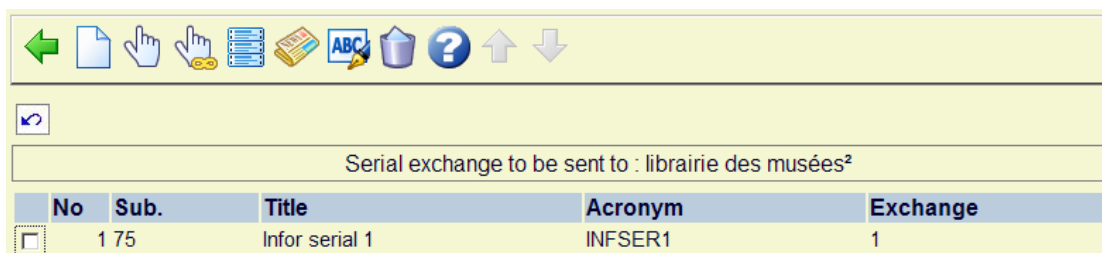


This screen lists the titles you *can send* to this supplier. The top bar displays the name of the selected supplier.

Options on the screen

Add to list: With this option you can add another of your own titles to the list. See section 327.2.2.1 for details

Modify status: Select a line and then this option to change the flag in the column **Exchange**. 0 means the title is (temporarily) not sent to this supplier. 1 means the title is sent to this supplier.



Serial exchange to be sent to : librairie des musées²

No	Sub.	Title	Acronym	Exchange
<input type="checkbox"/>	1 75	Infor serial 1	INFSER1	1

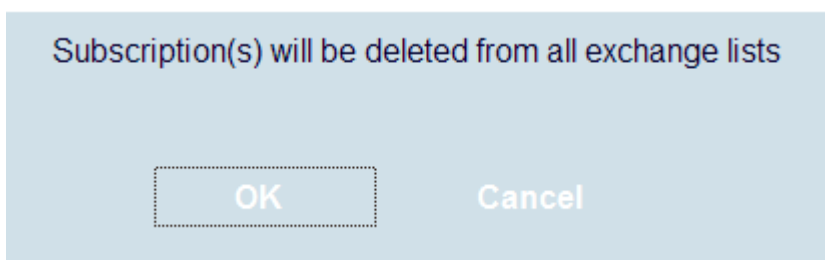
Toggle all statuses: With this option you change the flag in the column **Exchange**. I.e. 0 becomes 1 and 1 becomes 0.

Print label: After selecting this option, the standard form for generating output is displayed. This allows you to print an address label for this supplier.

View subscription: Select a line and then this option. This takes you to the screen with the general subscription details (as in AFO 321).

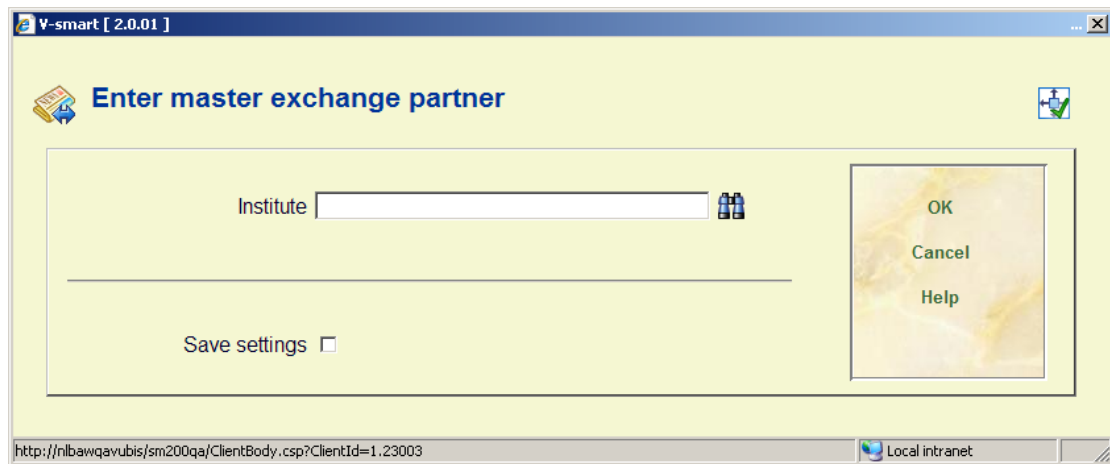
Update acronym: Select a line and then this option. An input screen appears, allowing you to add/modify the acronym for the selected serial.

Delete from exchange: Select a line and then this option to remove the selected title permanently from the list. A message will appear:



327.2.2.1 Add to list

Add to list: With this option you can add another of your own titles to the list. An input form will appear:

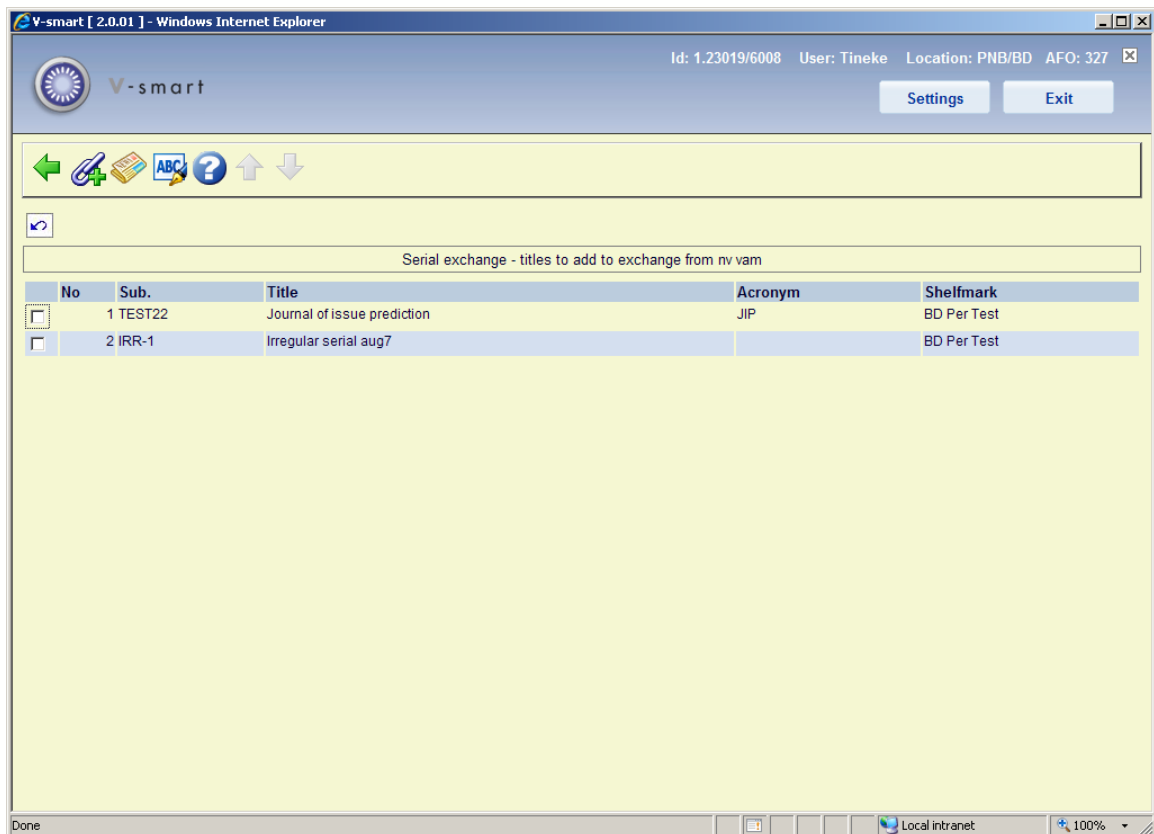


Enter your own supplier number.

Note

It is possible to have more than one supplier as the master exchange partner. For instance when within your organisation there are two departments publishing material that could be sent to exchange partners and you want to be able to distinguish the two.

An overview appears of titles NOT yet sent to the supplier in question. The top bar shows your own name (supplier):

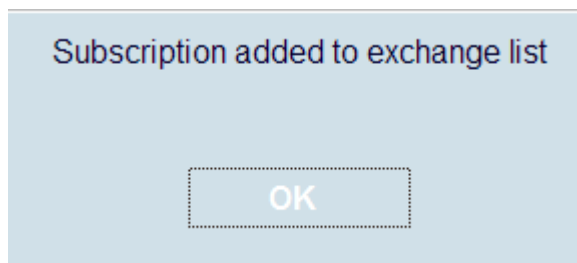


Options on the screen

Update acronym: Select a line and then this option. An input screen appears, allowing you to add/modify the acronym for the selected serial.

View subscription: Select a line and then this option. This takes you to the screen with the general subscription details (as in AFO 321).

Add to exchange: Select a line and then this option. A message appears:



After acknowledging the message the overview screen is redisplayed. The selected title is no longer in the list.

Serial exchange - titles to add to exchange from nv vam					
	No	Sub.	Title	Acronym	Shelfmark
<input type="checkbox"/>	1	IRR-1	Irregular serial aug7		BD Per Test

Next you return to the overview screen with the titles to be sent. Please note that the column **Exchange** is empty for the new title.

Serial exchange to be sent to : librairie des musées ²					
	No	Sub.	Title	Acronym	Exchange
<input type="checkbox"/>	1	75	Infor serial 1	INFSER1	1
<input type="checkbox"/>	2	76	Infor serial 2	INFSER2	0
<input type="checkbox"/>	3	77	Infor serial 3	INFSER3	0
<input type="checkbox"/>	4	TEST22	Journal of issue prediction	JIP	

You must still set the flag to 1 to ensure the title will actually appear on the list of titles to be sent.

- **Document control - Change History**

Version	Date	Change description	Author
1.0	November 2008	creation	